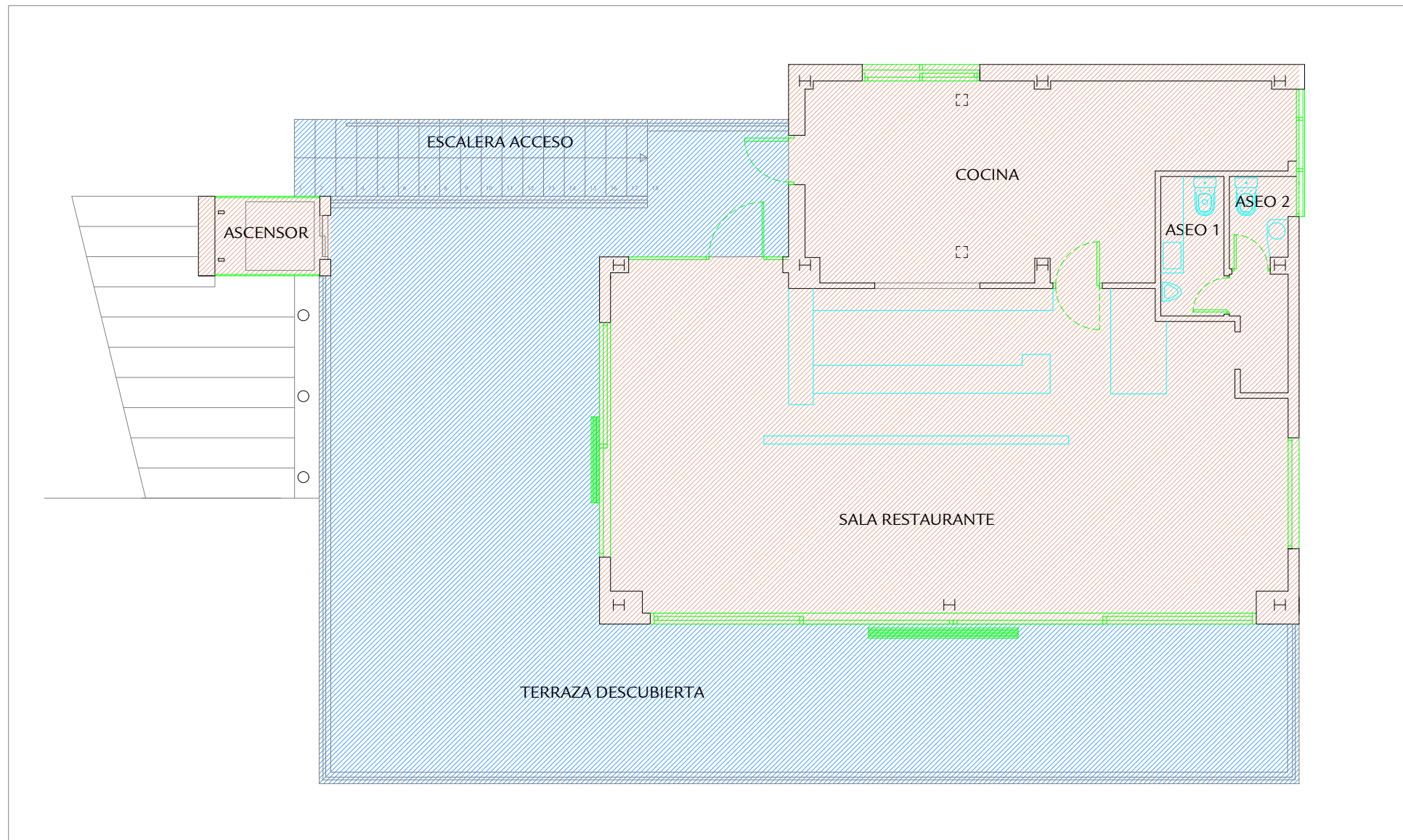
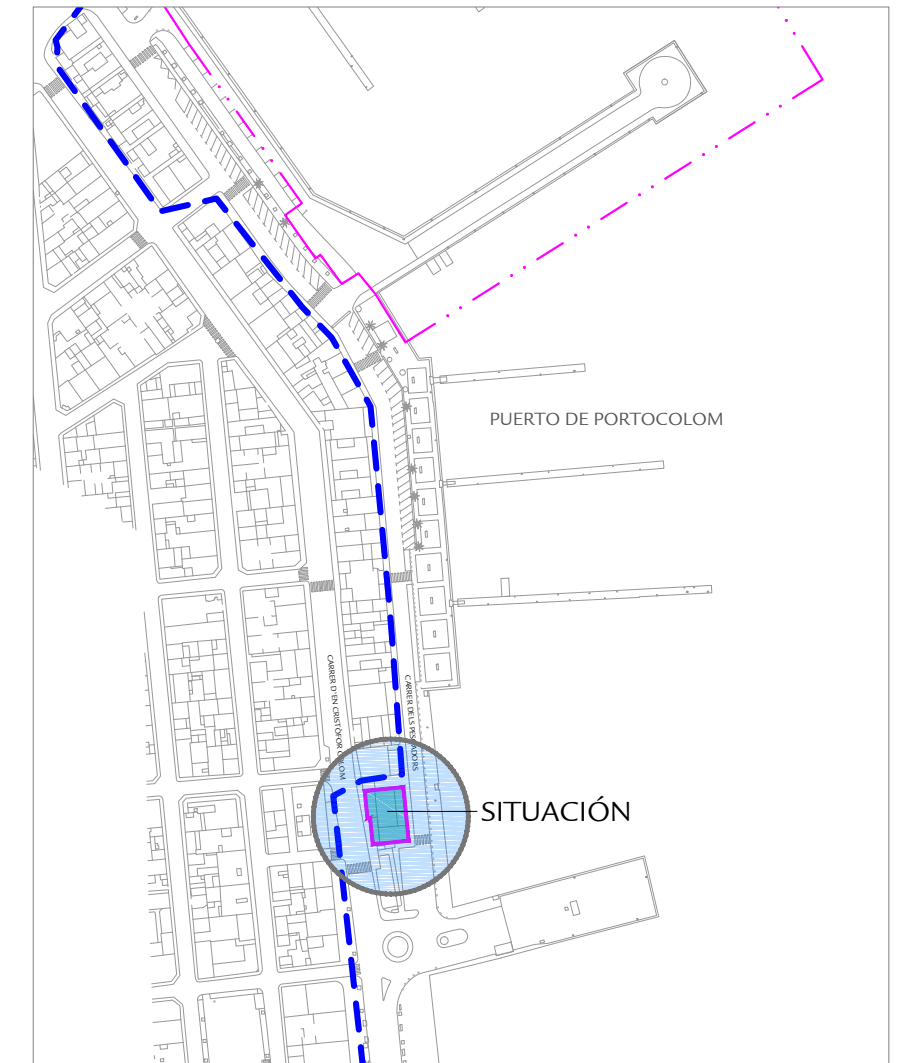


PLANTA BAJA. (ALMACENES) E:1/100




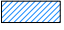



PLANTA PRIMERA. (RESTAURANTE) E:1/100



PLANTA GENERAL DEL PUERTO DE PORTOCOLOM E:1/2500

**SUPERFICIES CONCESIÓN RESTAURANTE**

<b>PLANTA BAJA</b>		
	ALMACENES	37.52m <sup>2</sup>
<b>PLANTA PRIMERA</b>		
	SALA RESTAURANTE+COCINA+ASEOS:	117.83m <sup>2</sup>
	TERRAZA DESCUBIERTA:	98.79m <sup>2</sup>
	ESCALERA ACCESO:	9.00m <sup>2</sup>
	ASCENSOR:	3.49m <sup>2</sup>
<b>TOTAL SUPERFICIE PLANTA PRIMERA</b>		<b>229.11m<sup>2</sup></b>
<b>SUPERFICIE TOTAL DE LA CONCESIÓN:</b>		<b>266.63m<sup>2</sup></b>



11. FACHADA PRINCIPAL



12. FACHADA DESDE EL MAR



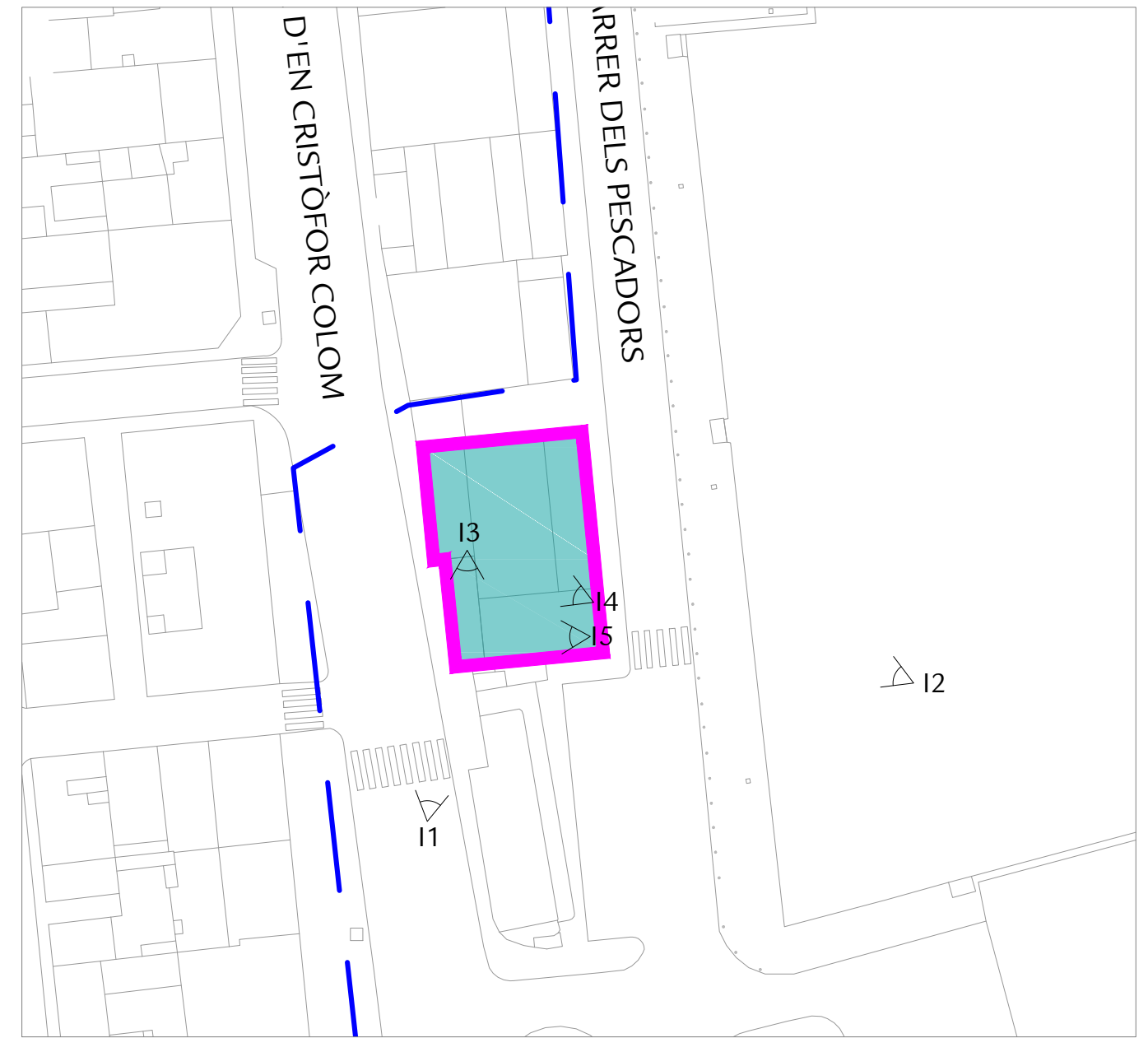
13. ACCESO A PLTA. 1ª ASCENSOR



14. TERRAZA EXTERIOR



15. TERRAZA EXTERIOR



PLANTA GENERAL

Ref:\2106\CONCESSIO RESTAURANT PORTOCOLOM.dwg





11. ACCESO LOCAL



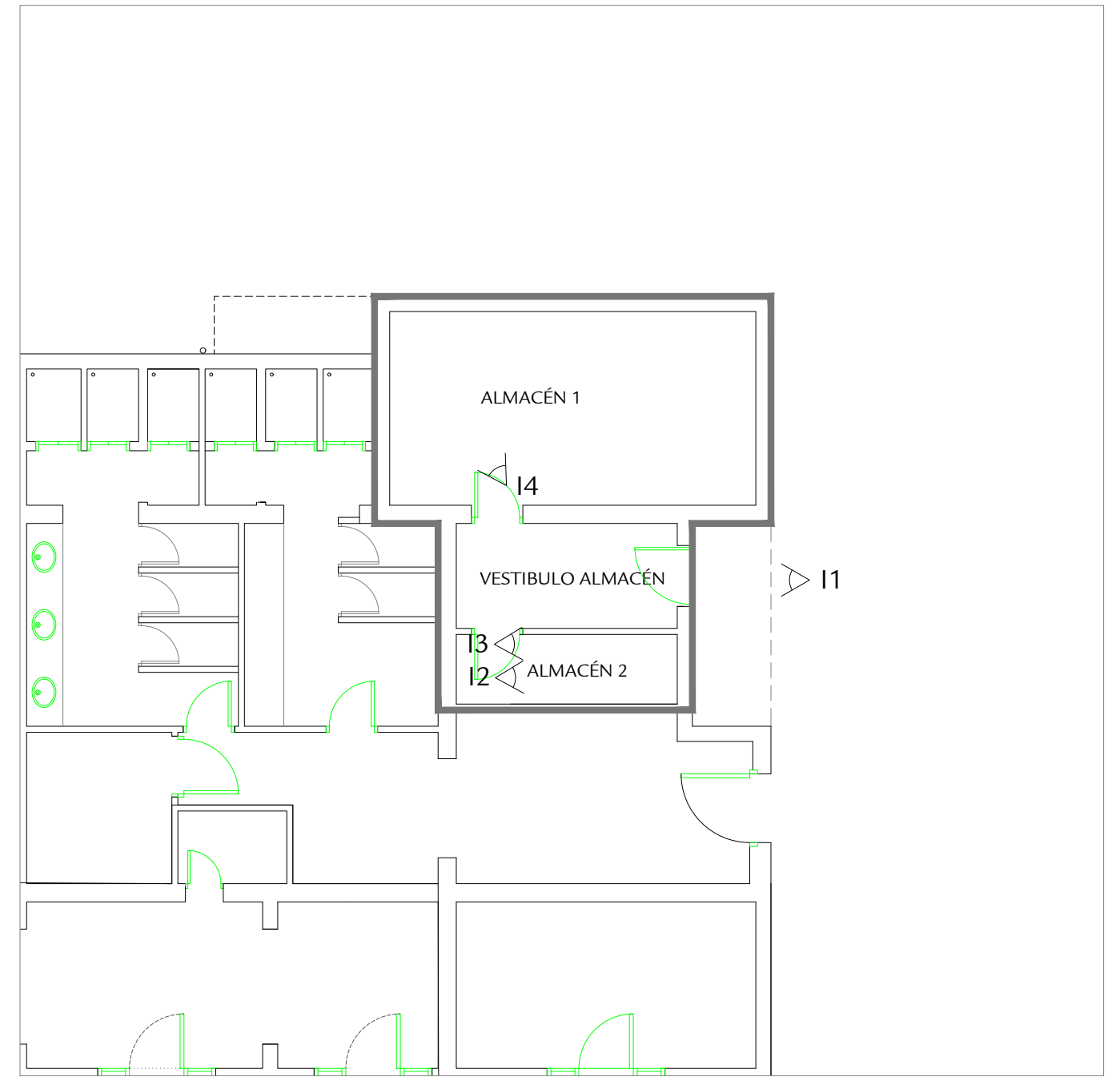
12. ALMACÉN



13. ALMACÉN



14. ALMACÉN



PLANTA BAJA. E:1/100

Ref.: 2106\CONCESSIO RESTAURANT PORTOCOLOM.dwg





I1. SALA RESTAURANTE



I2. SALA RESTAURANTE



I3. COCINA



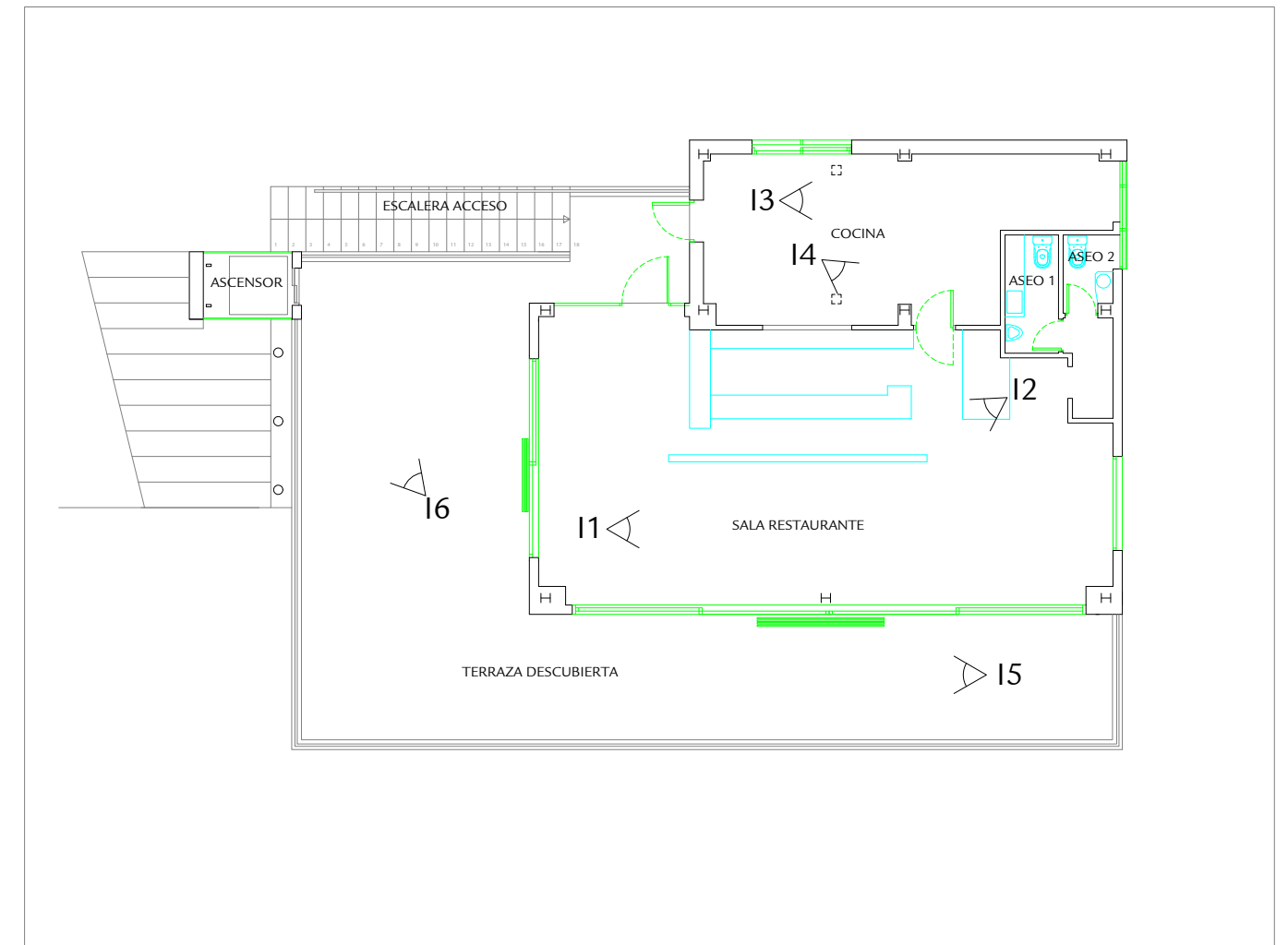
I4. COCINA



I5. SALA RESTAURANTE



I6. CUBIERTA



PLANTA PRIMERA. E:1/150